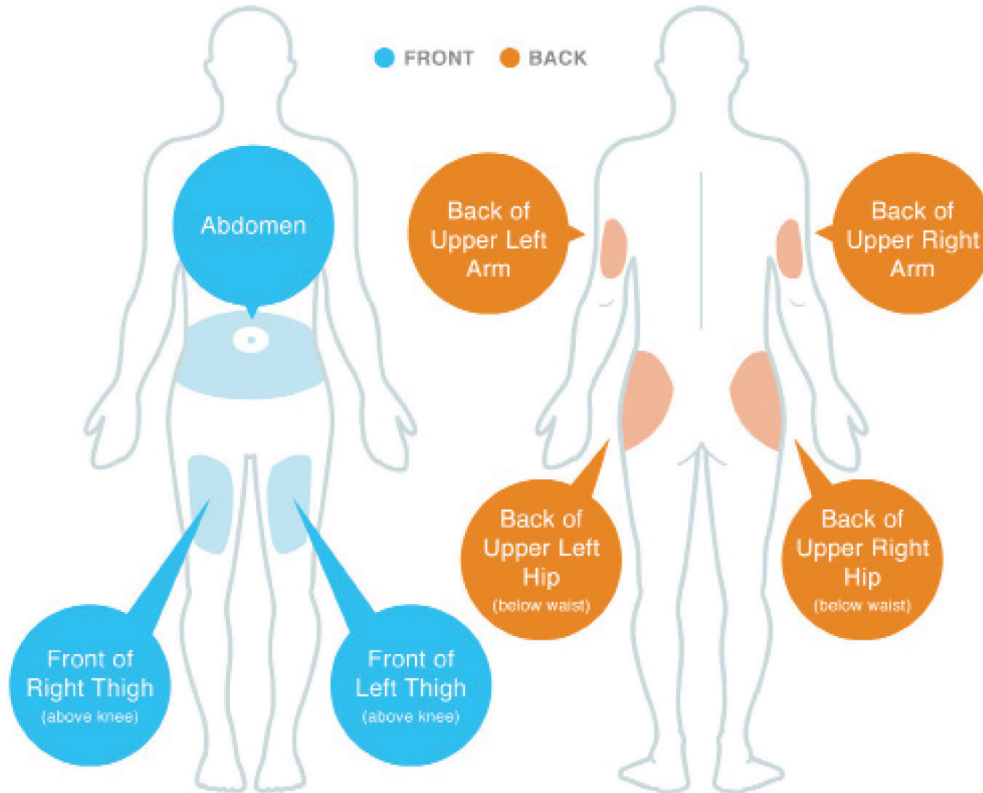


Your Injection Site Rotation Plan

Inject Glatiramer Acetate into the fatty layer under your skin (subcutaneously).



Remember: There are multiple injection sites within each of the 7 injection areas.

For detailed instructions on how to use Glatiramer Acetate Injection, please read the Patient Information Leaflet and the Instructions for Use in the accompanying full Prescribing Information.

Location	Day	Depth Setting
Back of Upper Right Arm (fleshy area)		
Back of Upper Left Arm (fleshy area)		
Back of Upper Right Hip (below waist)		
Back of Upper Left Hip (below waist)		
Front of Right Thigh (2 inches above knee and 2 inches below groin)		
Front of Left Thigh (2 inches above knee and 2 inches below groin)		
Abdomen (Stomach area; avoid 2 inches around the belly button)		

There are **7 possible areas** for Glatiramer Acetate Injections on your body, and multiple injection sites within each area. Having a rotation plan helps you avoid injection in the same sites more than once per week.

Always rotate your injection sites

- ✓ There are 7 possible areas for Glatiramer Acetate Injections on your body (see other side).
- ✓ **Always inject into the fatty layer under your skin (subcutaneously).**
- ✓ You may find it helpful to record the location of your injection site each time you inject. Use the rotation plan your Healthcare Provider has created for you.
- ✓ **Never inject into the same place (site) more than once a week, or over and over again.**
- ✓ Look and touch each injection site before choosing an injection site. Avoid injecting in sites that show lumps, dents, scarring, or other irregularities. Do not inject in sites where the skin has scarring or “dents”. Using scarred or dented skin for your injections may make your skin worse.

Call 1.844.695.2667
for 24/7 nurse support
for help with your injection

For detailed instructions on how to use Glatiramer Acetate Injection, please read the Patient Information Leaflet and the Instructions for Use in the accompanying full Prescribing Information.

USE

GLATIRAMER ACETATE INJECTION is a prescription medicine used for the treatment of people with relapsing forms of multiple sclerosis (MS), to include clinically isolated syndrome, relapsing-remitting disease, and active secondary progressive disease, in adults.

IMPORTANT SAFETY INFORMATION

Do not take GLATIRAMER ACETATE INJECTION if you are allergic to glatiramer acetate or mannitol.

Serious side effects may happen right after or within minutes after you inject glatiramer acetate injection at any time during your course of treatment. Call your doctor right away if you have any of these immediate post-injection reaction symptoms including: redness to your cheeks or other parts of the body (flushing); chest pain; fast heart beat; anxiety; breathing problems or tightness in your throat; or swelling, rash, hives, or itching. If you have symptoms of an immediate post-injection reaction, do not give yourself more injections until a doctor tells you to.

Chest pain may occur either as part of the immediate post-injection reaction or on its own. This pain usually only lasts a few minutes or can begin around 1 month after you start using glatiramer acetate injection. Call your doctor right away if you experience chest pain.

A permanent indentation under the skin (lipoatrophy and, rarely, death of your skin tissue also referred to as necrosis) at the injection site may occur due to local destruction of fat tissue. In order to reduce your chance of developing these problems, be sure to follow your doctor's instruction on how to use glatiramer acetate injection and be sure to choose a different injection site each time you use glatiramer acetate injection.

Liver problems, including liver failure, can occur with GLATIRAMER ACETATE INJECTION. Call your healthcare provider right away if you have symptoms, such as nausea, loss of appetite, tiredness, dark colored urine and pale stools, yellowing of your skin or the white part of your eye, bleeding more easily than normal, confusion, or sleepiness.

The most common side effects in studies of GLATIRAMER ACETATE INJECTION are redness, pain, swelling, itching, or a lump at the site of injection, rash, shortness of breath, and flushing. These are not all the possible side effects of GLATIRAMER ACETATE INJECTION. For a complete list, ask your doctor or pharmacist. Tell your doctor about any side effects that you have while taking GLATIRAMER ACETATE INJECTION.

You are encouraged to report negative side effects of prescription drugs to the FDA.

Visit www.fda.gov/medwatch or call **1-800-FDA-1088**.

Please see full Prescribing Information, Patient Information Leaflet and Instructions for Use for [GLATIRAMER ACETATE INJECTION 20 mg/mL](#) or [GLATIRAMER ACETATE INJECTION 40 mg/mL](#).